

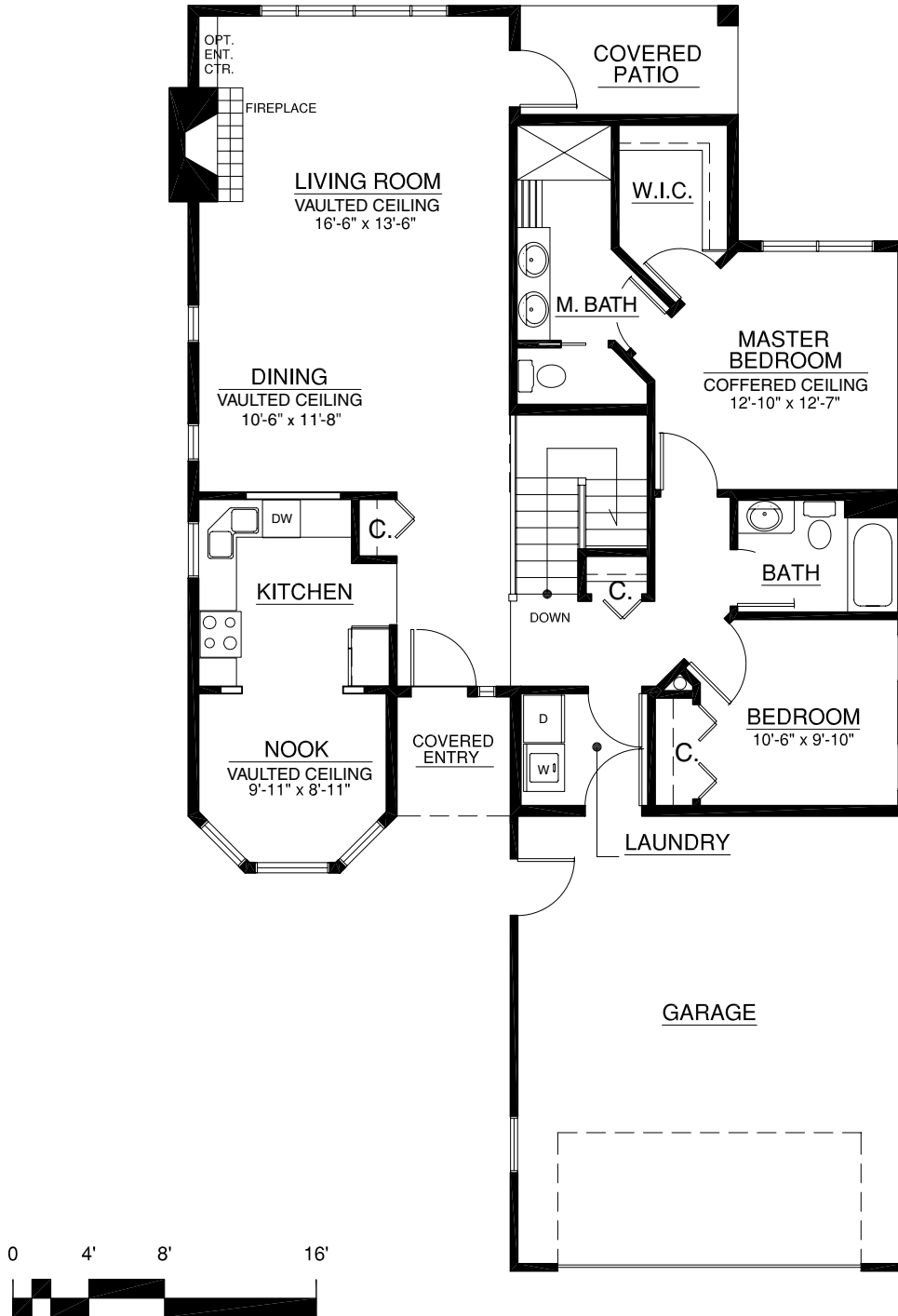
# Bungalows

## The Yoho

Main 1,431 sq. ft. • Garage 504 sq. ft.  
2 Bedroom | 2 Bath



For illustration purposes only. Square footage, actual room sizes, and features may vary. See construction documents.



## Touchmark at Wedgewood

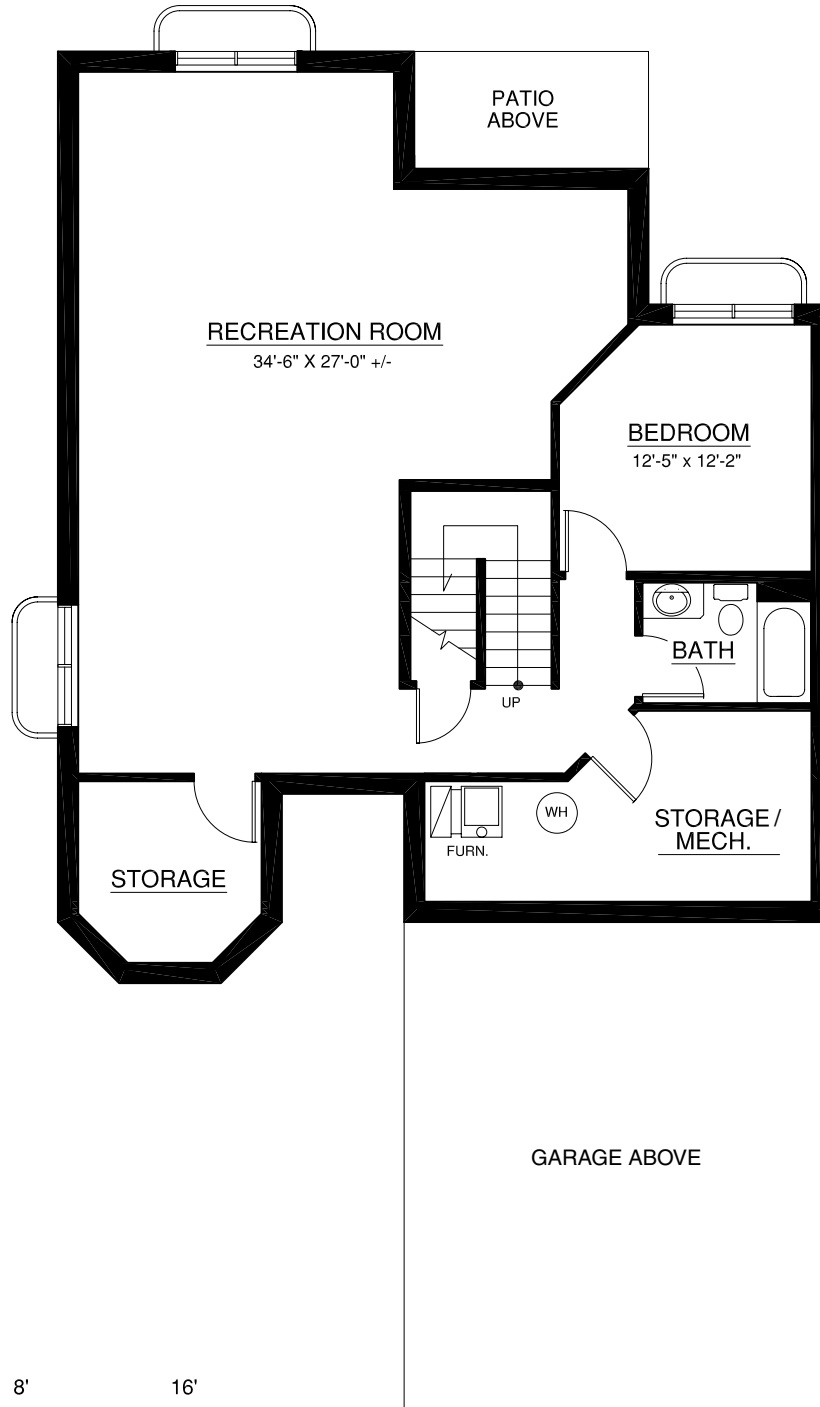
18333 Lessard Road | Edmonton, AB T6M 2Y5 | 780-577-5000 | TouchmarkEdmonton.com

# Bungalows

**The Yoho**  
Basement (optional) 1,431 sq. ft.



For illustration purposes only. Square footage, actual room sizes, and features may vary. See construction documents.



## Touchmark at Wedgewood

18333 Lessard Road | Edmonton, AB T6M 2Y5 | 780-577-5000 | TouchmarkEdmonton.com