

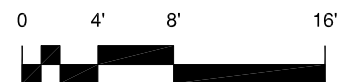
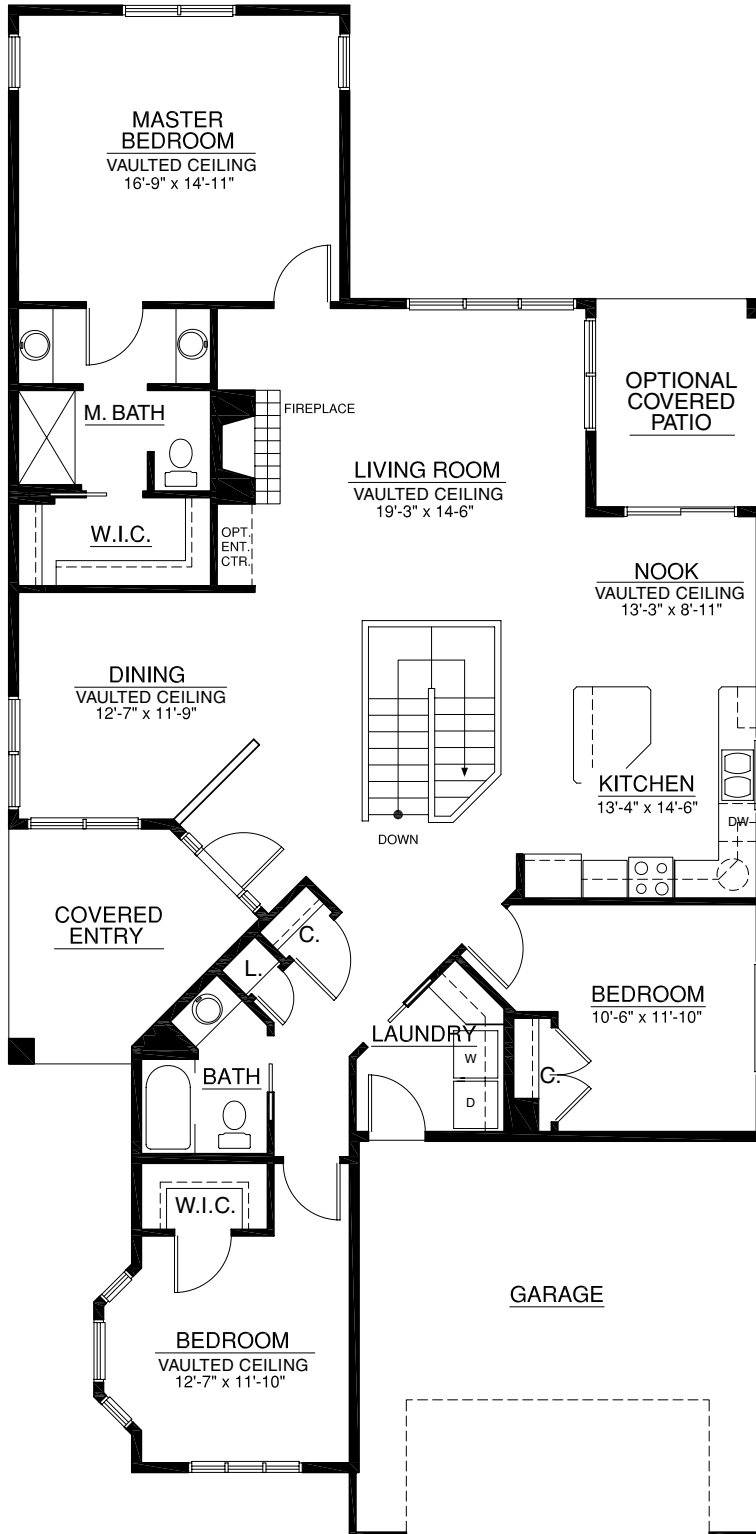
Bungalows

The Whistler

Main 2,040 sq. ft. • Garage 453 sq. ft.
3 Bedroom | 2 Bath



For illustration purposes only. Square footage, actual room sizes, and features may vary. See construction documents.



Touchmark at Wedgewood

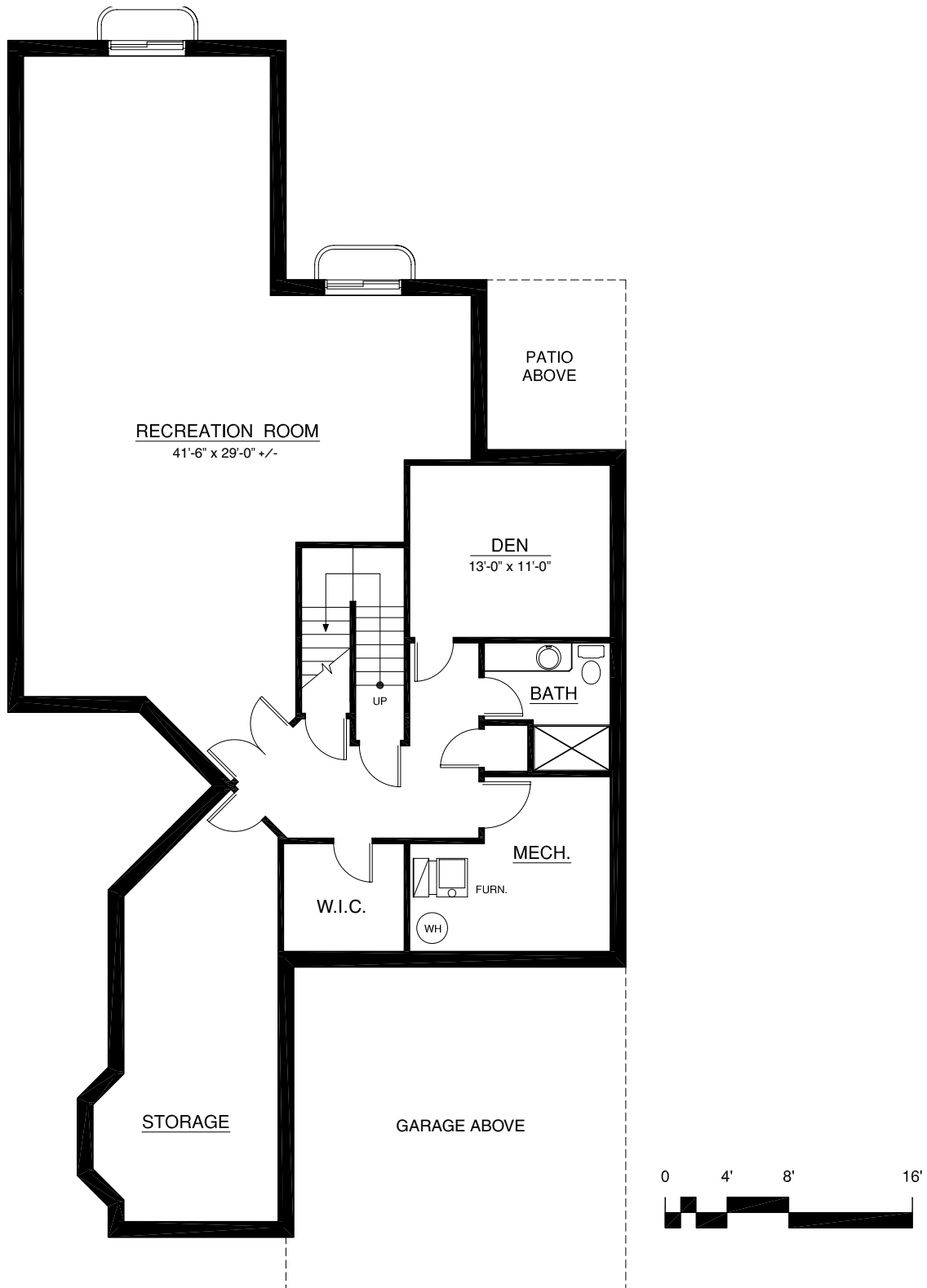
18333 Lessard Road | Edmonton, AB T6M 2Y5 | 780-577-5000 | TouchmarkEdmonton.com

Bungalows

The Whistler
Basement (optional) 2,040 sq. ft.



For illustration purposes only. Square footage, actual room sizes, and features may vary. See construction documents.



Touchmark at Wedgewood

18333 Lessard Road | Edmonton, AB T6M 2Y5 | 780-577-5000 | TouchmarkEdmonton.com