

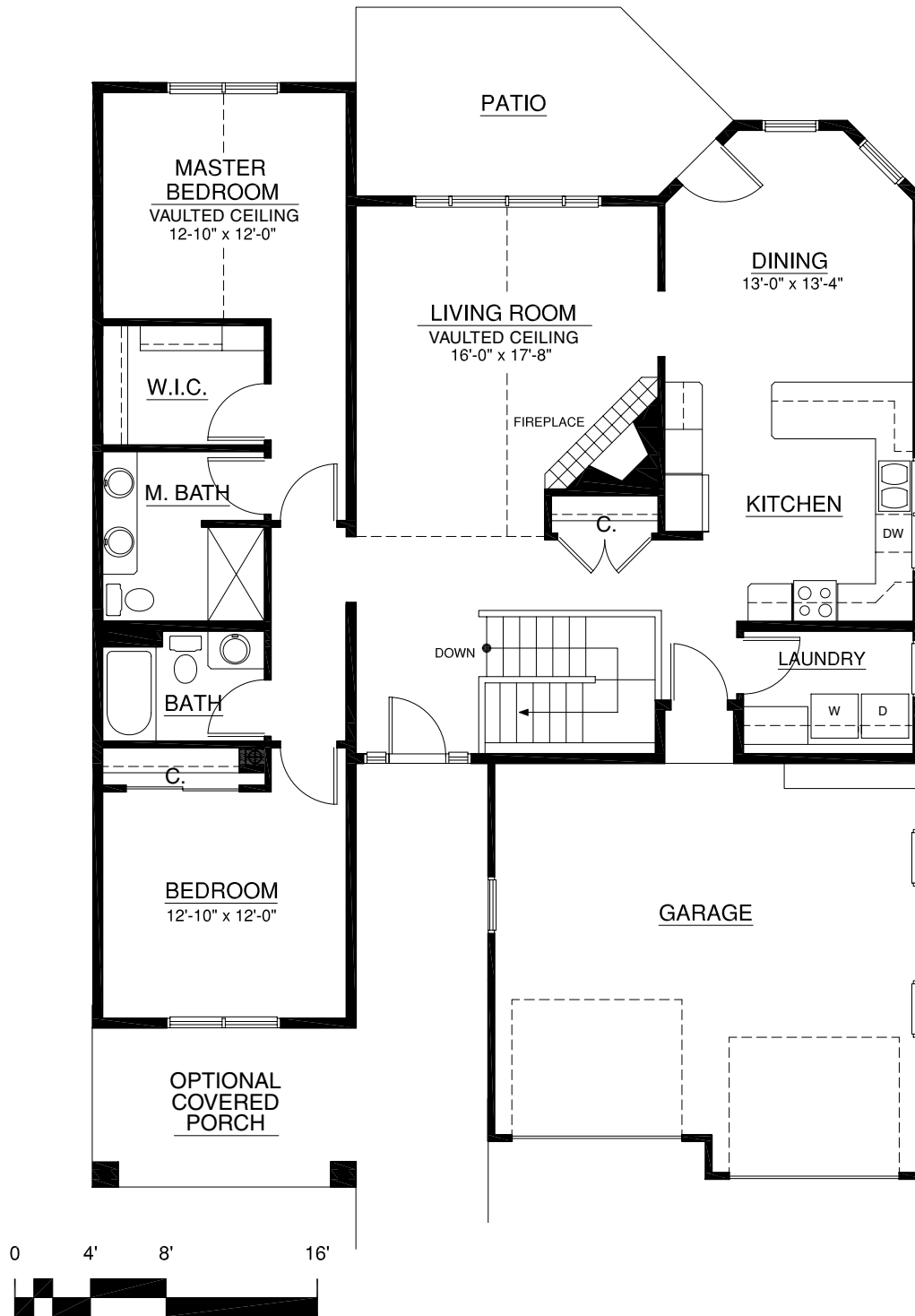
Bungalows

The Waterton

Main 1,638 sq. ft. • Garage 493 sq. ft.
2 Bedroom | 2 Bath



For illustration purposes only. Square footage, actual room sizes, and features may vary. See construction documents.



Touchmark at Wedgewood

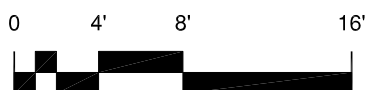
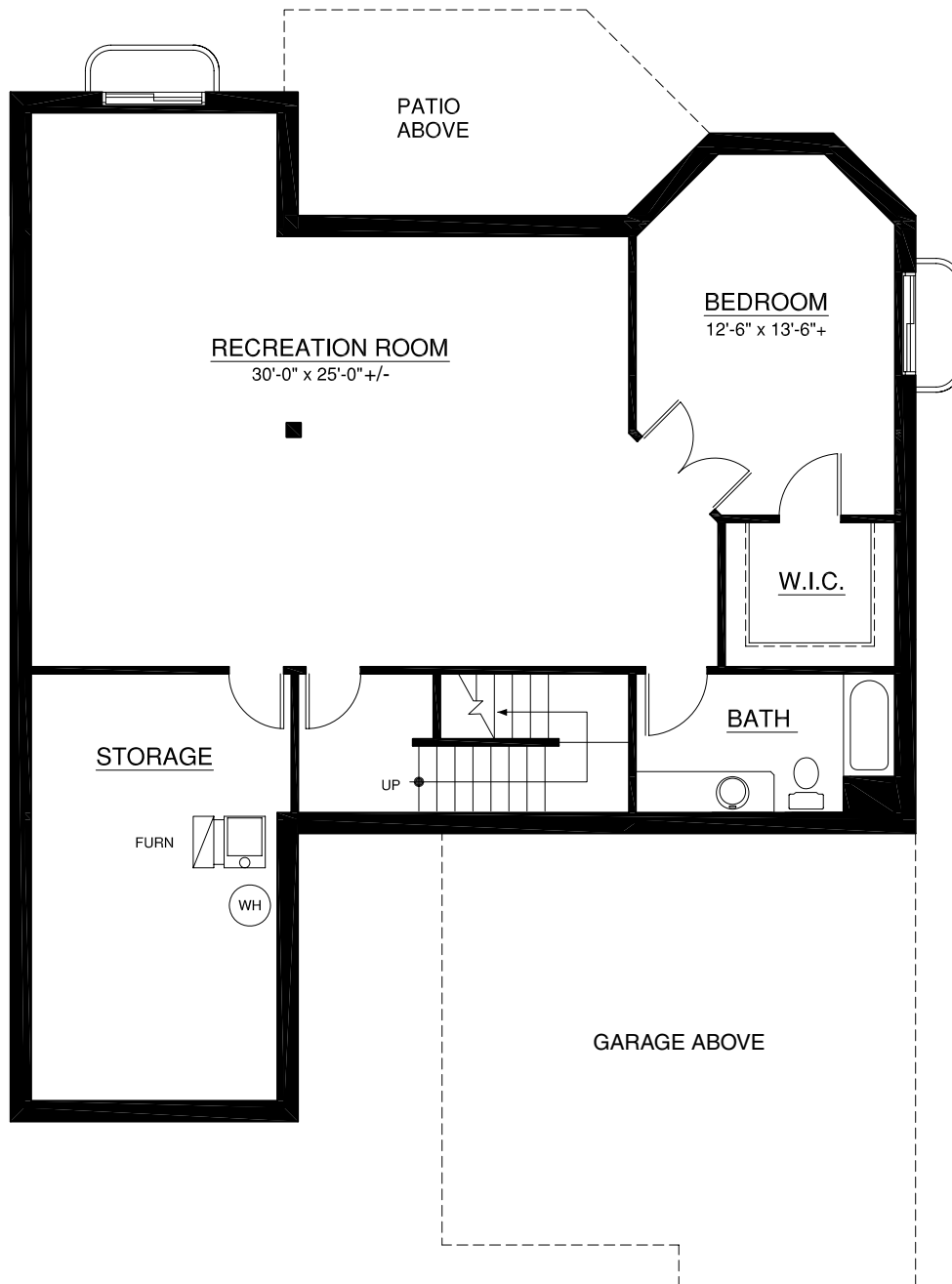
18333 Lessard Road | Edmonton, AB T6M 2Y5 | 780-577-5000 | TouchmarkEdmonton.com

Bungalows

The Waterton
Basement (optional) 1,638 sq. ft.



For illustration purposes only. Square footage, actual room sizes, and features may vary. See construction documents.



Touchmark at Wedgewood

18333 Lessard Road | Edmonton, AB T6M 2Y5 | 780-577-5000 | TouchmarkEdmonton.com